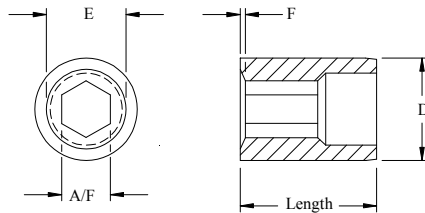


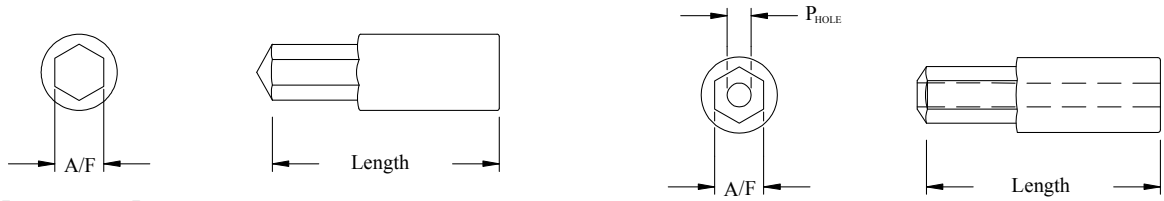
Socket Head

Screw Size	Pin Number	A/F inch/mm	Penetration inch/mm	Pin Length inch/mm	Tamperproof Pin Number	Pin Hole inch/mm
0	0HS-SH	.0508/1.29	.032/.790	.525/13.34	—	—
1	1HS-SH	.063/1.61	.038/.965	.532/13.51	1HS-SH-T	.023/.58
2	2HS-SH	.0789/2.00	.044/1.12	.537/13.64	2HS-SH-T	.029/.74
3	3HS-SH	.0789/2.00	.049/1.24	.542/13.77	3HS-SH-T	.029/.74
4	4HS-SH	.095/2.41	.059/1.49	.549/13.94	4HS-SH-T	.036/.91
5	5HS-SH	.095/2.41	.066/1.68	.556/14.12	5HS-SH-T	.036/.91
6	6HS-SH	.1109/2.82	.071/1.80	.560/14.22	6HS-SH-T	.042/1.07
8	8HS-SH	.1424/3.62	.085/2.16	.573/14.55	8HS-SH-T	.054/1.37
10	10HS-SH	.1585/4.03	.098/2.49	.584/14.83	10HS-SH-T	.060/1.52
1/4	1/4HS-SH	.1898/4.82	.130/3.30	1.112/28.24	1/4HS-SH-T	.073/1.85
5/16	5/16HS-SH	.2528/6.42	.162/4.11	1.140/28.96	5/16HS-SH-T	.098/2.49
3/8	3/8HS-SH	.3158/8.02	.194/4.92	1.168/29.67	3/8HS-SH-T	.123/3.12
7/16	7/16HS-SH	.3775/9.59	.229/5.82	1.180/29.97	—	—
1/2	1/2HS-SH	.3775/9.59	.260/6.60	1.196/30.38	—	—



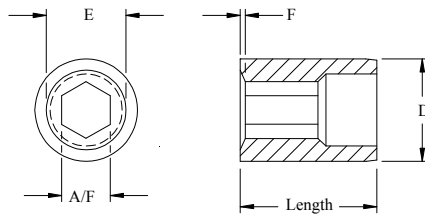
Screw Size	Adapter Number	A/F inch/mm	E inch/mm	F inch/mm	D inch/mm	Length inch/mm
0	0HSA-SH	.0508/1.29	.094/2.39	.006/.15	0.562/14.27	.500/12.70
1	1HSA-SH	.063/1.61	.116/2.95	.006/.15	0.562/14.27	.500/12.70
2	2HSA-SH	.0789/2.00	.136/3.45	.007/.18	0.562/14.27	.500/12.70
3	3HSA-SH	.0789/2.00	.157/3.99	.007/.18	0.562/14.27	.500/12.70
4	4HSA-SH	.095/2.41	.178/4.52	.008/.20	0.562/14.27	.500/12.70
5	5HSA-SH	.095/2.41	.201/5.11	.010/.25	0.562/14.27	.500/12.70
6	6HSA-SH	.1109/2.82	.221/5.61	.011/.25	0.562/14.27	.500/12.70
8	8HSA-SH	.1424/3.62	.264/6.71	.012/.30	0.562/14.27	.500/12.70
10	10HSA-SH	.1585/4.03	.306/7.77	.014/.36	0.562/14.27	.500/12.70
1/4	1/4HSA-SH	.1898/4.82	.365/9.27	.018/.46	0.750/19.05	1.00/25.40
5/16	5/16HSA-SH	.2528/6.42	.457/11.61	.022/.56	1.00/25.40	1.00/25.40
3/8	3/8HSA-SH	.3158/8.02	.556/14.12	.026/.66	1.00/25.40	1.00/25.40
7/16	7/16HSA-SH	.3775/9.59	.648/16.46	.029/.74	1.00/25.40	1.00/25.40
1/2	1/2HSA-SH	.3775/9.59	.750/19.05	.050/1.27	1.25/31.75	1.00/25.40

1. M42 Material Standard for Pins (RC 63-65).
2. M2 Material Standard for Adapters (RC 60-62).
3. Tamperproof style pins available (add -T to the end of the part number to specify).
4. PVD Coatings available for cold and hot heading applications.
5. Raised or depressed headmarking on adapters available per request.



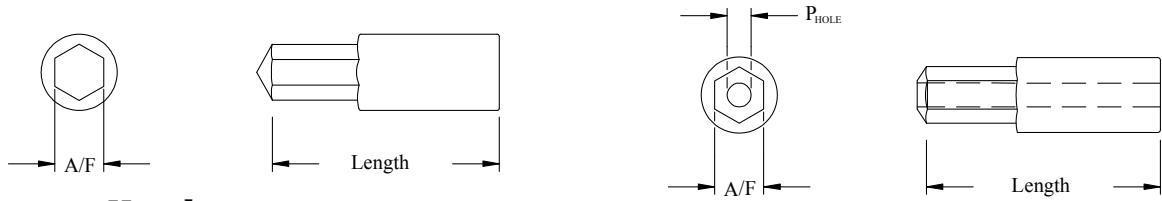
Flat Head

Screw Size	Pin Number	A/F inch/mm	Penetration inch/mm	Pin Length inch/mm	Tamperproof Pin Number	Pin Hole inch/mm
0	0HS-FS	.0353/.90	.030/.762	.280/7.11	-	-
1	1HS-FS	.0508/1.29	.036/.910	.536/13.61	-	-
2	2HS-FS	.0508/1.29	.046/1.17	.546/13.87	-	-
3	3HS-FS	.0633/1.61	.049/1.24	.549/13.94	3HS-FS-T	.023/.58
4	4HS-FS	.0633/1.61	.060/1.52	.560/14.22	4HS-FS-T	.023/.58
5	5HS-FS	.0789/2.00	.066/1.68	.566/14.38	5HS-FS-T	.029/.74
6	6HS-FS	.0789/2.00	.071/1.80	.571/14.50	6HS-FS-T	.029/.74
8	8HS-FS	.095/2.41	.081/2.05	.581/14.76	8HS-FS-T	.036/.91
10	10HS-FS	.1268/3.22	.092/2.34	.592/15.04	10HS-FS-T	.048/1.22
1/4	1/4HS-FS	.1585/4.03	.116/2.95	1.116/28.35	1/4HS-FS-T	.060/1.52
5/16	5/16HS-FS	.1898/4.82	.140/3.56	1.140/28.96	5/16HS-FS-T	.073/1.85
3/8	3/8HS-FS	.2215/5.63	.164/4.17	1.164/29.57	3/8HS-FS-T	.086/2.18
1/2	1/2HS-FS	.315/8.00	.192/4.88	1.192/30.28	1/2HS-FS-T	.098/2.49



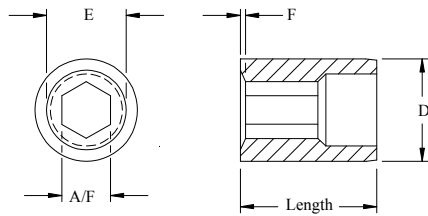
Screw Size	Adapter Number	A/F inch/mm	D inch/mm	Length inch/mm
0	0HSA-FS	.0353/.90	.0562/14.27	.500/12.70
1	1HSA-FS	.0508/1.29	.0562/14.27	.500/12.70
2	2HSA-FS	.0508/1.29	.0562/14.27	.500/12.70
3	3HSA-FS	.0633/1.61	.0562/14.27	.500/12.70
4	4HSA-FS	.0633/1.61	.0562/14.27	.500/12.70
5	5HSA-FS	.0789/2.00	.0562/14.27	.500/12.70
6	6HSA-FS	.0789/2.00	.0562/14.27	.500/12.70
8	8HSA-FS	.095/2.41	.0562/14.27	.500/12.70
10	10HSA-FS	.1268/3.22	.0562/14.27	.500/12.70
1/4	1/4HSA-FS	.1585/4.03	.750/19.05	1.00/25.40
5/16	5/16HSA-FS	.1898/4.82	1.00/25.40	1.00/25.40
3/8	3/8HSA-FS	.2215/5.63	1.00/25.40	1.00/25.40
1/2	1/2HSA-FS	.315/8.00	1.00/25.40	1.00/25.40

1. M42 Material Standard for Pins (RC 63-65).
2. M2 Material Standard for Adapters (RC 60-62).
3. Tamperproof style pins available (add -T to the end of the part number to specify).
4. PVD Coatings available for cold and hot heading applications.
5. Raised or depressed headmarking on adapters available per request.



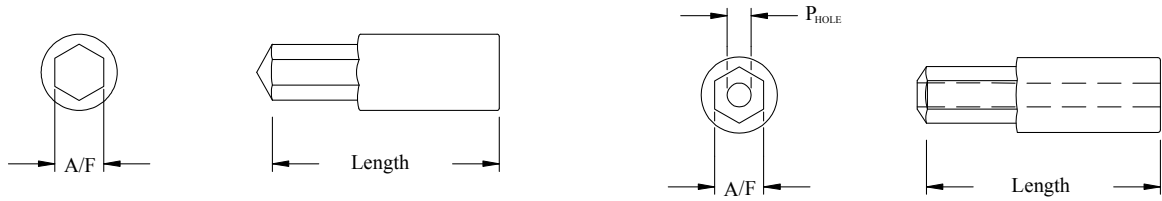
Button Head

Screw Size	Pin Number	A/F inch/mm	Penetration inch/mm	Pin Length inch/mm	Tamperproof Pin Number	Pin Hole inch/mm
0	0HS-BH	.0353/.90	.026/.660	.502/12.75	—	—
1	1HS-BH	.0508/1.29	.034/.860	.504/12.80	—	—
2	2HS-BH	.0508/1.29	.035/.890	.500/12.70	—	—
3	3HS-BH	.0633/1.61	.041/1.04	.500/12.70	3HS-BH-T	.023/.58
4	4HS-BH	.0633/1.61	.042/1.07	.495/12.57	4HS-BH-T	.023/.58
5	5HS-BH	.0789/2.00	.049/1.24	.495/12.57	5HS-B-T	.029/.74
6	6HS-BH	.0789/2.00	.051/1.30	.493/12.52	6HS-BH-T	.029/.74
8	8HS-BH	.095/2.41	.060/1.52	.489/12.42	8HS-BH-T	.036/.91
10	10HS-BH	.1268/3.22	.077/1.95	.489/12.42	10HS-BH-T	.048/1.22
1/4	1/4HS-BH	.1585/4.03	.095/2.41	.980/24.89	1/4HS-BH-T	.060/1.52
5/16	5/16HS-BH	.1898/4.82	.113/2.87	.968/24.59	5/16HS-BH-T	.073/1.85
3/8	3/8HS-BH	.2215/5.63	.137/3.48	.955/24.26	3/8HS-BH-T	.086/2.18
1/2	1/2 HS-BH	.315/8.00	.190/4.83	1.192/30.28	1/2HS-BH-T	.098/2.49



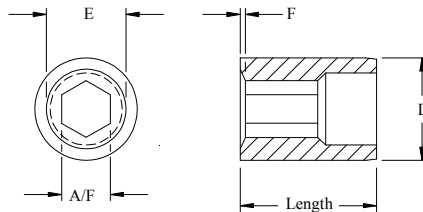
Screw Size	Adapter Number	A/F inch/mm	E inch/mm	F inch/mm	D inch/mm	Length inch/mm
0	0HSA-BH	.0353/.90	.119/3.02	.023/.58	.0562/14.27	.500/12.70
1	1HSA-BH	.0508/1.29	.144/3.66	.030/.76	.0562/14.27	.500/12.70
2	2HSA-BH	.0508/1.29	.169/4.29	.035/.89	.0562/14.27	.500/12.70
3	3HSA-BH	.0633/1.61	.191/4.85	.041/1.04	.0562/14.27	.500/12.70
4	4HSA-BH	.0633/1.61	.216/5.49	.047/1.19	.0562/14.27	.500/12.70
5	5HSA-BH	.0789/2.00	.241/6.12	.054/1.37	.0562/14.27	.500/12.70
6	6HSA-BH	.0789/2.00	.266/6.76	.058/1.47	.0562/14.27	.500/12.70
8	8HSA-BH	.095/2.41	.315/8.00	.071/1.80	.0562/14.27	.500/12.70
10	10HSA-BH	.1268/3.22	.369/9.37	.084/2.13	.0562/14.27	.500/12.70
1/4	1/4HSA-BH	.1585/4.03	.447/11.35	.115/2.92	.750/19.05	1.00/25.40
5/16	5/16HSA-BH	.1898/4.82	.557/14.15	.145/3.68	1.00/25.40	1.00/25.40
3/8	3/8HSA-BH	.2215/5.63	.666/16.92	.177/4.50	1.00/25.40	1.00/25.40
1/2	1/2HSA-BH	.315/8.00	.885/22.48	.230/5.84	1.00/25.40	1.00/25.40

1. M42 Material Standard for Pins (RC 63-65).
2. M2 Material Standard for Adapters (RC 60-62).
3. Tamperproof style pins available (add -T to the end of the part number to specify).
4. PVD Coatings available for cold and hot heading applications.
5. Raised or depressed headmarking on adapters available per request.



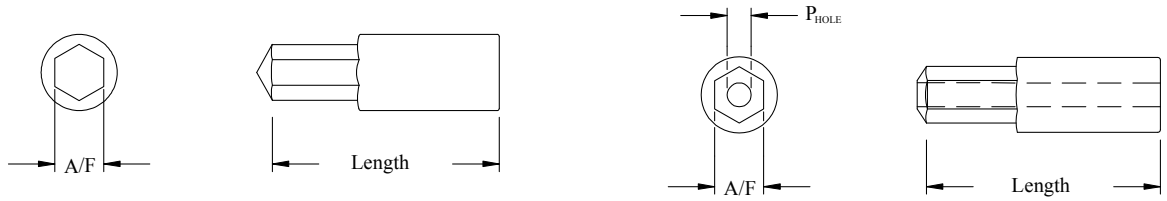
Socket Head (DIN 912)

Screw Size	Pin Number	A/F inch/mm	Penetration inch/mm	Pin Length inch/mm	Tamperproof Pin Number	Pin Hole inch/mm
M1.6	1.6MHS-SH	.0606/1.54	.036/.91	.535/13.59	1.6MHS-SH-T	.023/.58
M2	2MHS-SH	.0606/1.54	.050/1.27	.542/13.77	2MHS-SH-T	.023/.58
M2.5	2.5MHS-SH	.0803/2.04	.058/1.47	.530/13.46	2.5MHS-SH-T	.030/.76
M3	3MHS-SH	.1006/2.56	.060/1.52	.557/14.15	3MHS-SH-T	.038/.97
M4	4MHS-SH	.1207/3.07	.071/1.80	.575/14.61	4MHS-SH-T	.045/1.14
M5	5MHS-SH	.1606/4.08	.102/2.59	.589/14.96	5MHS-SH-T	.060/1.52
M6	6MHS-SH	.2000/5.08	.111/2.82	1.105/28.07	6MHS-SH-T	.076/1.93
M8	8MHS-SH	.239/6.09	.151/3.84	1.136/28.85	8MHS-SH-T	.090/2.29
M10	10MHS-SH	.3193/8.11	.194/4.93	1.168/29.67	10MHS-SH-T	.121/3.07
M12	12MHS-SH	.3985/10.12	.244/6.20	1.199/30.45	12MHS-SH-T	.151/3.84



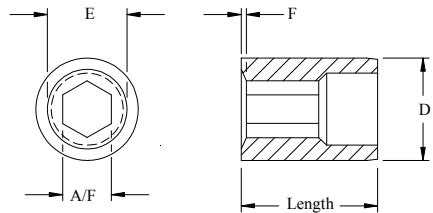
Screw Size	Adapter Number	A/F inch/mm	E inch/mm	F inch/mm	D inch/mm	Length inch/mm
M1.6	1.6MHSA-SH	.060/1.52	.116/2.95	.006/.15	.562/14.27	.500/12.70
M2	2MHSA-SH	.060/1.52	.147/3.73	.008/.20	.562/14.27	.500/12.70
M2.5	2.5MHSA-SH	.080/2.03	.175/4.45	.010/.25	.562/14.27	.500/12.70
M3	3MHSA-SH	.100/2.54	.214/5.44	.012/.30	.562/14.27	.500/12.70
M4	4MHSA-SH	.120/3.05	.273/6.93	.015/.38	.562/14.27	.500/12.70
M5	5MHSA-SH	.160/4.06	.332/8.43	.020/.51	.562/14.27	.500/12.70
M6	6MHSA-SH	.199/5.05	.391/9.93	.023/.58	.750/19.50	1.00/25.40
M8	8MHSA-SH	.239/6.07	.508/12.90	.031/.79	1.00/25.40	1.00/25.40
M10	10MHSA-SH	.319/8.10	.625/15.88	.039/.99	1.00/25.40	1.00/25.40
M12	12MHSA-SH	.398/10.11	.705/17.91	.047/1.19	1.00/25.40	1.00/25.40

1. M42 Material for Pins (63-65RC).
2. M2 Material for Adapters (RC 60-62)
3. Tamperproof style pins available (add -T to the end of the part number to specify).
4. PVD Coatings available for cold and hot heading applications.
5. Raised or depressed head marking on adapters available per request.



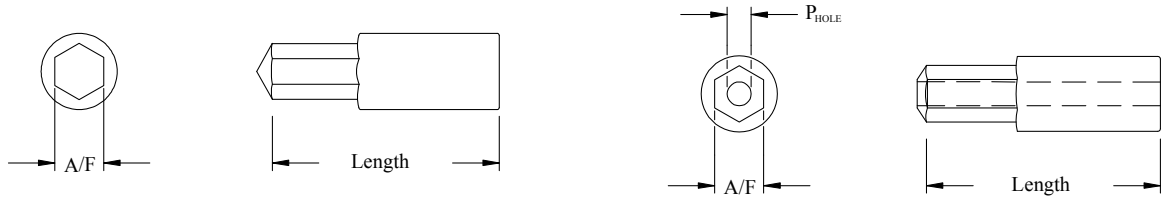
Flat Head (DIN 7991)

Screw Size	Pin Number	A/F inch/mm	Penetration inch/mm	Pin Length inch/mm	Tamperproof Pin Number	Pin Hole inch/mm
M3	3MHS-FS	.0803/2.04	.051/1.29	.551/14.00	3MHS-FS-T	.030/.76
M4	4MHS-FS	.1006/2.56	.069/1.73	.569/14.45	4MHS-FS-T	.038/.97
M5	5MHS-FS	.1207/3.07	.083/2.11	.583/14.81	5MHS-FS-T	.046/1.17
M6	6MHS-FS	.1606/4.08	.095/2.41	.595/15.11	6MHS-FS-T	.060/1.52
M8	8MHS-FS	.2000/5.08	.122/3.10	1.122/28.50	8MHS-FS-T	.076/1.93
M10	10MHS-FS	.2398/6.09	.152/3.86	1.152/29.26	10MHS-FS-T	.090/2.29
M12	12MHS-FS	.03193/8.11	.181/4.60	1.181/30.00	12MHS-FS-T	.121/3.07



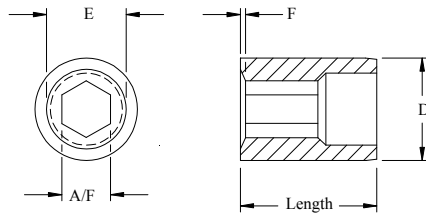
Screw Size	Adapter Number	A/F inch/mm	D inch/mm	Length inch/mm
M3	3MHSA-FS	.0803/2.04	.562/14.27	.500/12.70
M4	4MHSA-FS	.1006/2.56	.562/14.27	.500/12.70
M5	5MHSA-FS	.1207/3.07	.562/14.27	.500/12.70
M6	6MHSA-FS	.1606/4.08	.562/14.27	.500/12.70
M8	8MHSA-FS	.2000/5.08	1.00/25.40	1.00/25.40
M10	10MHSA-FS	.2398/6.09	1.00/25.40	1.00/25.40
M12	12MHSA-FS	.03193/8.11	1.25/31.75	1.00/25.40

1. **M42 Material for Pins (63-65RC).**
2. **M2 Material for Adapters (RC 60-62)**
3. **Tamperproof style pins available (add -T to the end of the part number to specify).**
4. **PVD Coatings available for cold and hot heading applications.**
5. **Raised or depressed head marking on adapters available per request.**



Button Head (DIN 7380)

Screw Size	Pin Number	A/F inch/mm	Penetration inch/mm	Pin Length inch/mm	Tamperproof Pin Number	Pin Hole inch/mm
M3	3MHS-BH	.0803/2.04	.056/1.42	.507/12.88	3MHS-BH-T	.030/.76
M4	4MHS-BH	.1006/2.56	.066/1.68	.495/12.57	4MHS-BH-T	.038/.97
M5	5MHS-BH	.1207/3.07	.075/1.91	.488/12.40	5MHS-BH-T	.046/1.17
M6	6MHS-BH	.1606/4.08	.097/2.46	.500/12.70	6MHS-BH-T	.060/1.52
M8	8MHS-BH	.2000/5.08	.117/2.97	.977/24.82	8MHS-BH-T	.076/1.93
M10	10MHS-BH	.2398/6.09	.136/3.45	1.079/27.41	10MHS-BH-T	.090/2.29
M12	12MHS-BH	.3193/8.11	.179/4.55	1.077/27.36	12MHS-BH-T	.121/3.07



Screw Size	Adapter Number	A/F inch/mm	E inch/mm	F inch/mm	D inch/mm	Length inch/mm
M3	3MHSA-BH	.0803/2.04	.225/5.72	.049/1.24	0.562/14.27	0.500/12.70
M4	4MHSA-BH	.1006/2.56	.299/7.59	.071/1.80	0.562/14.27	0.500/12.70
M5	5MHSA-BH	.1207/3.07	.374/9.50	.087/2.21	0.562/14.27	0.500/12.70
M6	6MHSA-BH	.1606/4.08	.413/10.49	.097/2.46	0.562/14.27	0.500/12.70
M8	8MHSA-BH	.2000/5.08	.551/14.00	.140/3.56	1.00/25.40	1.00/25.40
M10	10MHSA-BH	.2398/6.09	.689/17.50	.184/4.67	1.00/25.40	1.00/25.40
M12	12MHSA-BH	.3193/8.11	.827/21.01	.227/5.77	1.25/31.75	1.00/25.40

1. M42 Material for Pins (63-65RC).
2. M2 Material for Adapters (RC 60-62)
3. Tamperproof style pins available (add -T to the end of the part number to specify).
4. PVD Coatings available for cold and hot heading applications.
5. Raised or depressed head marking on adapters available per request.